

# **RWE Renewables UK Dogger Bank South (West) Limited**

# **RWE Renewables UK Dogger Bank South (East) Limited**

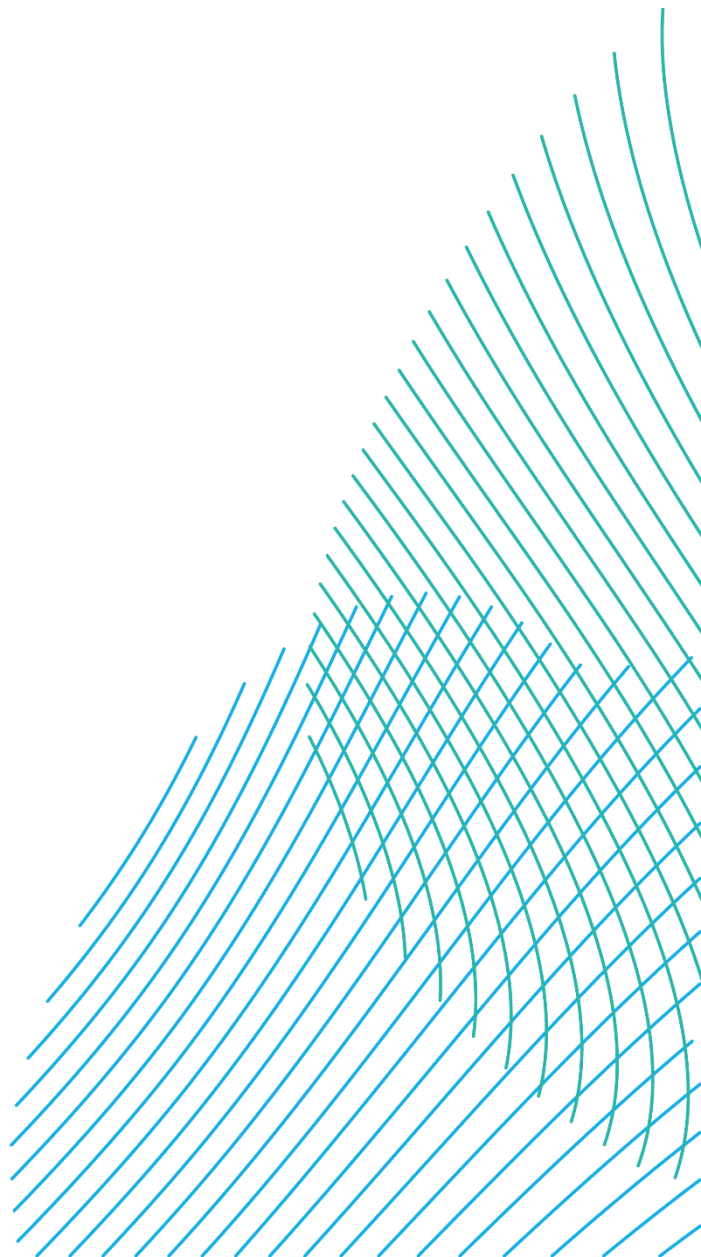
# **Dogger Bank South Offshore Wind Farms**

**Environmental Statement  
Volume 7  
Chapter 27 – Human Health  
Figure 27-1**

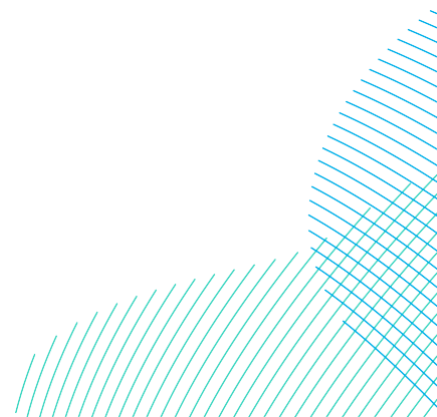
**June 2024**

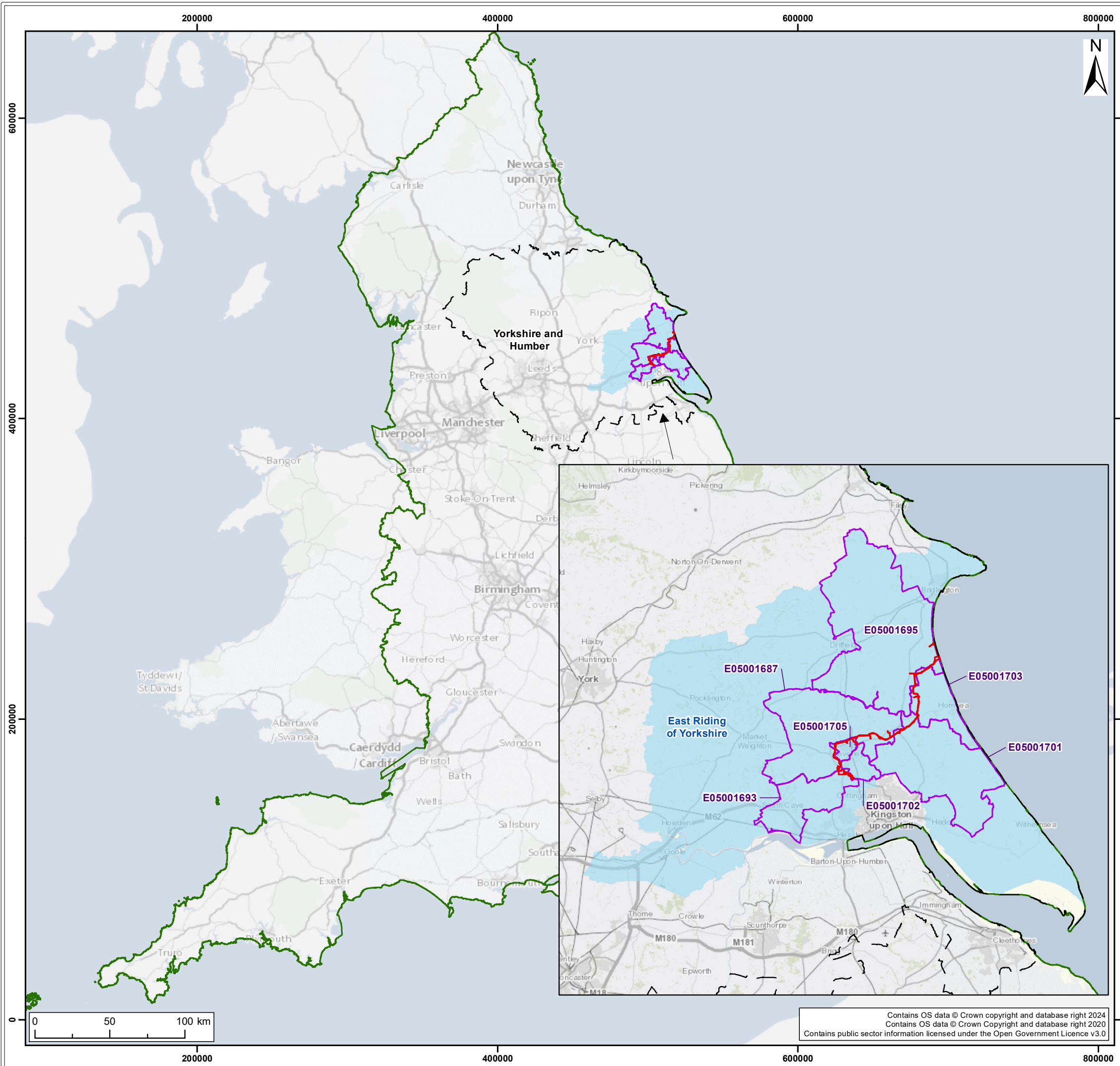
**Application Reference: 7.27.1  
APFP Regulation: 5(2)(a)  
Revision: 01**

**Unrestricted**

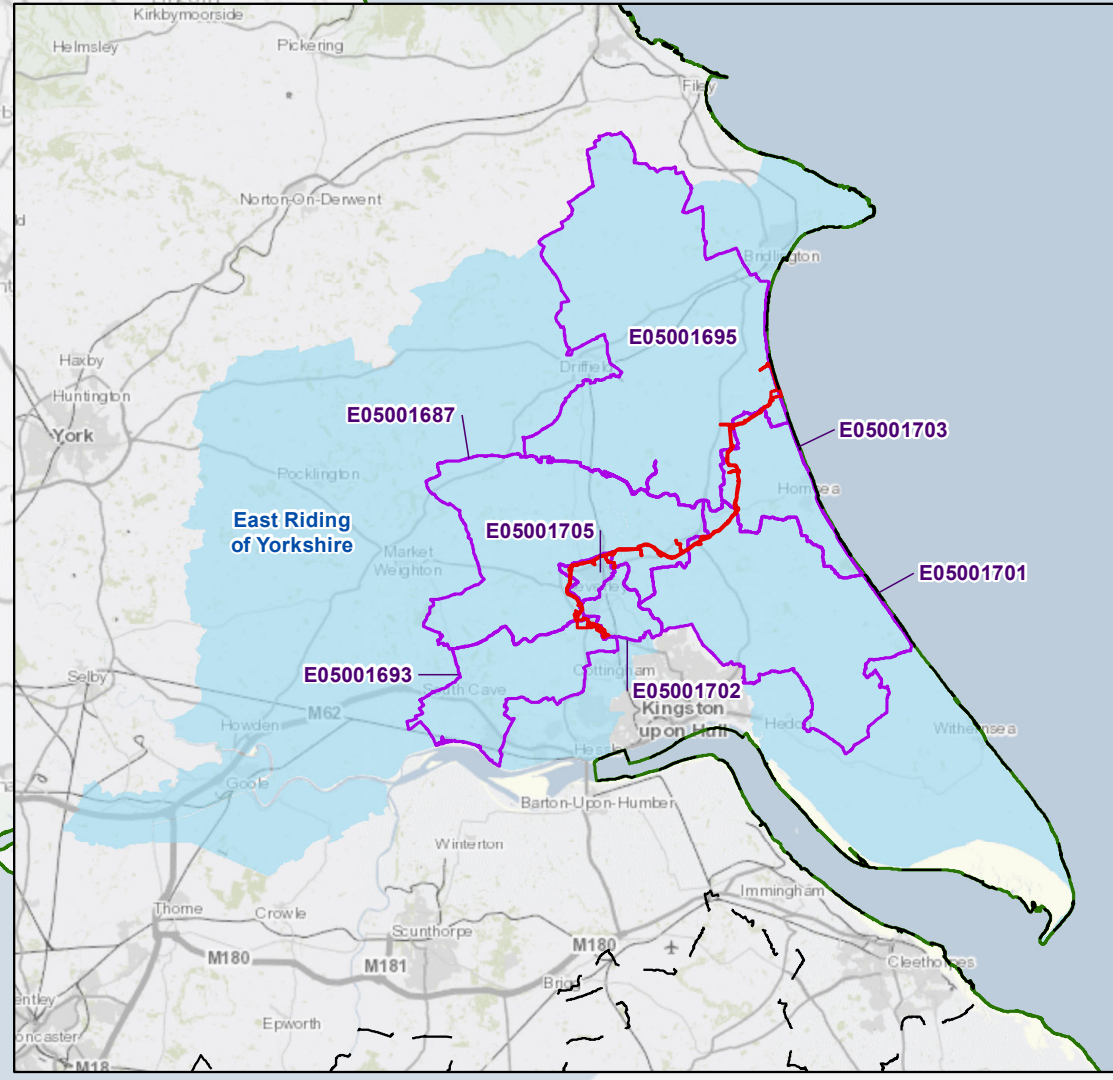


Company:	<b>RWE Renewables UK Dogger Bank South (West) Limited and RWE Renewables UK Dogger Bank South (East) Limited</b>	Asset:	<b>Development</b>		
Project:	<b>Dogger Bank South Offshore Wind Farms</b>	Sub Project/Package:	<b>Consents</b>		
Document Title or Description:	Environmental Statement – Chapter 27 – Figure 27-1				
Document Number:	005114700-01	Contractor Reference Number:	PC2340-RHD-ON-ZZ-RP-Z-0110		
<p><i>COPYRIGHT © RWE Renewables UK Dogger Bank South (West) Limited and RWE Renewables UK Dogger Bank South (East) Limited, 2024. All rights reserved.</i></p> <p><i>This document is supplied on and subject to the terms and conditions of the Contractual Agreement relating to this work, under which this document has been supplied, in particular:</i></p> <p><b>LIABILITY</b></p> <p><i>In preparation of this document RWE Renewables UK Dogger Bank South (West) Limited and RWE Renewables UK Dogger Bank South (East) Limited has made reasonable efforts to ensure that the content is accurate, up to date and complete for the purpose for which it was contracted. RWE Renewables UK Dogger Bank South (West) Limited and RWE Renewables UK Dogger Bank South (East) Limited makes no warranty as to the accuracy or completeness of material supplied by the client or their agent.</i></p> <p><i>Other than any liability on RWE Renewables UK Dogger Bank South (West) Limited and RWE Renewables UK Dogger Bank South (East) Limited detailed in the contracts between the parties for this work RWE Renewables UK Dogger Bank South (West) Limited and RWE Renewables UK Dogger Bank South (East) Limited shall have no liability for any loss, damage, injury, claim, expense, cost or other consequence arising as a result of use or reliance upon any information contained in or omitted from this document.</i></p> <p><i>Any persons intending to use this document should satisfy themselves as to its applicability for their intended purpose.</i></p> <p><i>The user of this document has the obligation to employ safe working practices for any activities referred to and to adopt specific practices appropriate to local conditions.</i></p>					
<b>Rev No.</b>	<b>Date</b>	<b>Status/Reason for Issue</b>	<b>Author</b>	<b>Checked by</b>	<b>Approved by</b>
01	June 2024	Final for DCO Application	RHDHV	RWE	RWE





- Legend:
- Onshore Development Area
  - Ward
  - Local Authority
  - Region
  - England



SUI	REV	DATE	DESCRIPTION	DRW	CHK	APR
S4	P03	30/04/2024	Suitable for stage approval	SB	RP	ND
S3	P02	15/03/2024	Suitable for review & comment	SB	RP	ND
S2	P01	20/02/2024	Suitable for Information	SB	RP	ND

Title:  
**Health Study Areas**

Figure: 27-1 Drawing No: PC2340-RHD-ON-ZZ-DR-Z-0719

Co-ordinate system: British National Grid Page Size: A3 Scale: 1:2,500,000

Project: Dogger Bank South Offshore Wind Farms Report: Environmental Statement

Contains OS data © Crown copyright and database right 2024  
Contains OS data © Crown Copyright and database right 2020  
Contains public sector information licensed under the Open Government Licence v3.0

